



Abadía Rosal

Handmade pavement with French Provence airs.

FEATURES AND VALUES

- Bulk density**
2.700 Kg/m3
- Porosity**
4,9 %
- Water absorption**
1,2 %
- Resistance to freezing**
168 Cycles without breakage
- Slipping resistance**
Vintage finishing 3 Class (CTE)
- Reaction to fire**
A1 Class
- Bending strength**
16.8 MPa middle value,
13.7 MPa lower expected value
- Compressive strength**
198 MPa middle value,
154 MPa lower expected value
- Abrasion resistance**
22 mm middle value,
23.5 mm maximum expected value

TECHNICAL DESCRIPTION

It is a natural limestone with a rustic and handcrafted finishing, also showing deep shades and a variation of soft colors among a palette of beiges, ochers and pale grays.

AESTHETIC QUALITIES

It shows a pleasantly uneven surface evoking the value of the course of time, inspiring also the idyllic feeling of the Mediterranean country houses during the XVIII century.

APPLICATIONS

Its hardness, compression and low porosity, ensure a durable performance and an easy maintenance; it is perfect for public works and also aesthetically suitable for residential use, as well as for commercial and restoration projects, either in outdoor or indoor environments.

TREATMENS

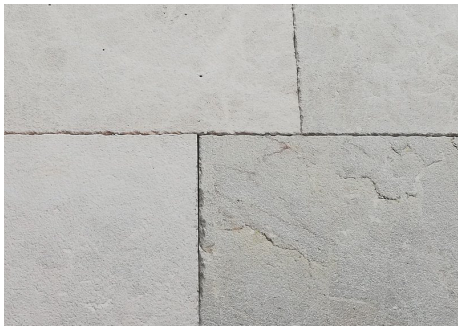
We advise to treat the natural stone, the first layer in the production line and the second once installed.

FORMATS

- Standard** Free length of 30 and 40 cm
- Trend** Roman opus with broken edges.
- Espesores** Starting from 2 cm we can produce any thickness.

FINISHING

VINTAGE



MOST APPROPRIATE USES

- Outdoor or indoor pavements showing a worn out effect.

ROSAL STONES
Mediterranean at home

Carretera de Granada, km 73
30400 Caravaca de la Cruz,
Murcia. Spain

Teléfono
(+34) 968 725 656
Móvil y WhatsApp
(+34) 629 470 419
info@rosalstones.com

[f](#) [t](#) [p](#) [i](#) [g+](#)
rosalstones.com