

## DECLARATION OF PERFORMANCE

N° 0301

1. Identification: **NATURAL STONE MASONRY UNITS ABADÍA**
2. Producer's name and address: **ARENISCAS ROSAL S.A.  
CTR de Granada Km 73  
30400 Caravaca -Murcia-  
catalina@rosalstones.com**

3. Uses: **Masonry : bearing and semi-bearing wall**
4. Evaluation and verification system of performance constancy: **2+**
5. FPC certification: **APPLUS No 0370-CPR-4019**
6. Declared performances:

Essential Features	Performances	Technical harmonized specifications
Size	According to project	UNE-EN 771-6:2012 +A1:2016
Dimensional tolerances	D2	
Configuration	NPD	
Mean value of compressive strength R	124.8 MPa	
Normalized compressive strength	99.9 MPa	
Shear bond strength	0,3 N/mm <sup>2</sup>	
Flexural bond strength	Average flexural strength value: 13.1 Mpa flexural strength: 13.1 Mpa Standard deviation: 1.4 Mpa	
Fire reaction	Euroclasse A1	
Water vapor permeability	μ dry: 200 μ wet: 150	
Capillary water absorption coefficient a atmospheric pressure	2,29%	
Bulk density	2660 kg/m <sup>3</sup>	
Thermal conductivity	1.7 W/(m K)	
Freeze–thaw durability	168 cycles without breaking	
Dangerous substances	Does not contain	
CO2 Emissions (1.623 Km by road) Entire life cycle	8.34 kg éq CO2/m2 (20 cm) 12.4 Kg éq CO2/m2 (30 cm)	

- The identified product performances at point n° 1 is conformed to performances declared at point n° 6.
- This current performance declarations is issued under the responsibility of the producer or manufacturer or wholesaler indicated at point n° 2.
- Signed by and on behalf of the producer:

Nom: Catalina Sánchez Robles  
Poste: Quality Manager

52812155S Firmado digitalmente por  
CATALINA 52812155S  
SANCHEZ CATALINA  
(R: SANCHEZ (R:  
A30093579) A30093579)  
A30093579) Fecha: 2023.04.21  
21:14:44 +02'00'

## DECLARATION OF PERFORMANCE

N° 0301

1. Identification: **ALBAMIEL NATURAL STONE MASONRY UNITS**
2. Producer's name and address: **ARENISCAS ROSAL S.A.  
CTR de Granada Km 73  
30400 Caravaca -Murcia-  
info@rosalstones.com**
3. Uses: **Masonry : bearing and semi-bearing wall**
4. Evaluation and verification system of performance constancy: **2+**
5. FPC certification: **APPLUS No 0370-CPR-4019**
6. Declared performances:

Essential Features	Performances	Technical harmonized specifications
<b>Size</b>	<b>According to project</b>	<b>UNE-EN 771-6:2012 +A1:2016</b>
<b>Dimensional tolerances</b>	<b>D2</b>	
<b>Configuration</b>	<b>NPD</b>	
<b>Mean value of compressive strength R</b>	<b>17,1 MPa</b>	
<b>Normalized compressive strength Classification</b>	<b>13,6 MPa Category I</b>	
<b>Shear bond strength</b>	<b>0,3 N/mm<sup>2</sup></b>	
<b>Flexural bond strength</b>	<b>Average bending strength value: 3.6 Mpa bending: 3.6 Mpa</b>	
<b>Fire reaction</b>	<b>Euroclasse A1</b>	
<b>Water vapor permeability</b>	<b>μ dry: 40 μ wet: 25</b>	
<b>Capillary water absorption coefficient (C1 / C2)</b>	<b>(273/320) g/m<sup>2</sup>s<sup>0,5</sup></b>	
<b>Bulk density</b>	<b>1880 kg/m<sup>3</sup></b>	
<b>Thermal conductivity</b>	<b>0.827 W/(m K)</b>	
<b>Freeze–thaw durability</b>	<b>168 cycles without breaking</b>	
<b>Dangerous substances</b>	<b>Does not contain</b>	
<b>Radioactivity</b>	<b>I=0.09</b>	
<b>Acoustic isolation</b>	<b>R=60DB ( 30 cm thickness)</b>	
<b>CO2 Emissions (1.623 Km by road) Entire life cycle</b>	<b>7.20 kg éq CO2/m2 (15-45 cm) 2.40 Kg éq CO2/m2 (2-15 cm)</b>	

- The identified product performances at point n° 1 is conformed to performances declared at point n° 6.
- This current performance declarations is issued under the responsibility of the producer or manufacturer or wholesaler indicated at point n° 2.
- Signed by and on behalf of the producer:

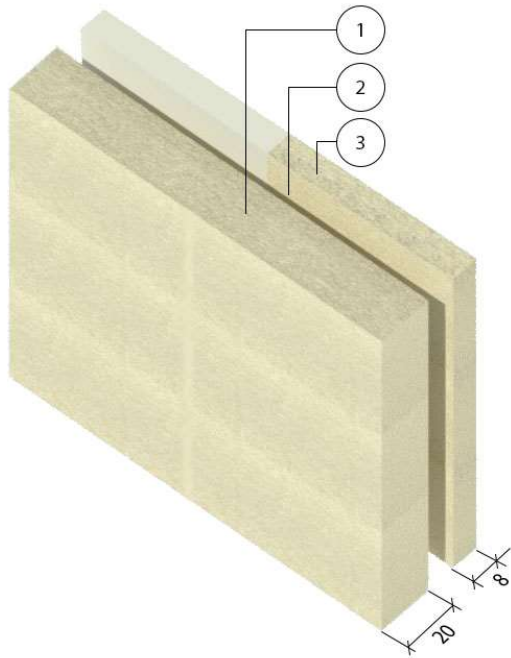
Nom: Catalina Sánchez Robles  
Poste: QUALITY MANAGER

**52812155S**  
**CATALINA**  
**SANCHEZ (R:**  
**A30093579)**

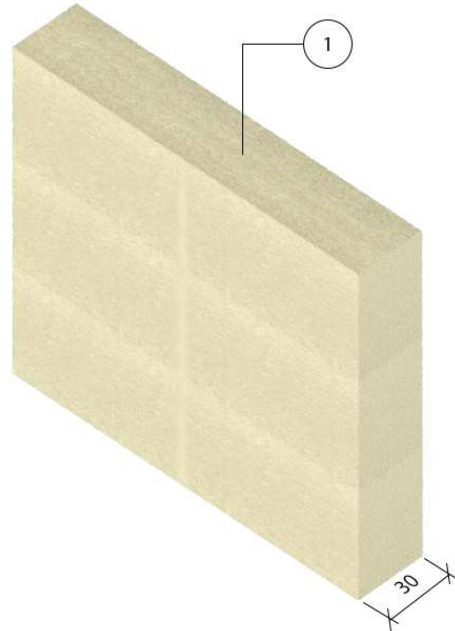
Firmado digitalmente  
por 52812155S  
CATALINA SANCHEZ  
(R: A30093579)  
Fecha: 2023.04.21  
21:15:29 +02'00'

## MASSIVE CONSTRUCTION: CONSTRUCTION DETAILS

### RESIDENTIAL USE



### INDUSTRIAL USE



- ① ALBAMIEL ASHLAR MASONRY WITH LIME MORTAR JOINT
- ② 10 CM INSULATION
- ③ INTERIOR LINING ALBAMIEL OR ANY OTHER OF YOUR CHOICE

## MASS CONSTRUCTION: PERFORMANCE \*

\* Tested on a 30 cm thick masonry wall

PERFORMANCE	ALBAMIEL VALUE	ABADÍA VALUE
<b>TRANSMITTANCE (U)</b> (residential use)	0,28 W/m <sup>2</sup> K	0,29 W/m <sup>2</sup> K
<b>THERMAL INERTIA</b>	940,23 J/(m <sup>2</sup> x s <sup>1/2</sup> x K)	
<b>ACOUSTIC INSULATION (R)</b>	60 dB	
<b>INSULATION TO WI-FI WAVES</b> (measured at frequencies of 5000 MHz)	Apantallamiento de 27,28 dB	
<b>RADIOACTIVITY (I)</b>	0,09	

# DECLARACIÓN MEDIOAMBIENTAL Y SANITARIA DE PRODUCTO

MUROS EN PIEDRA NATURAL ALBAMIEL

DE 14 A 45 CM DE ESPESOR

## FICHE DE DÉCLARATION ENVIRONNEMENTALE ET SANITAIRE DU PRODUIT

*ENVIRONMENTAL AND HEALTH PRODUCT  
DECLARATION*

**Murs en pierre naturelle ALBAMIEL  
D'épaisseur de 15 à 45 cm**

En conformité avec la norme NF EN 14025, la norme NF EN 15804+A1 et  
son complément national NF EN 15804/CN

N° d'enregistrement : 9-519:2020

Consulta el informe completo aquí:

Read the full report here / Lisez le rapport complet ici :

Albamiel 15-45 cm <https://www.base-inies.fr/iniesV4/dist/consultation.html?id=33533>

Albamiel 2-15 cm <https://www.base-inies.fr/iniesV4/dist/consultation.html?id=33534>

Abadía 20-30 cm <https://www.base-inies.fr/iniesV4/dist/consultation.html?id=29371>

Abadía 2 cm <https://www.base-inies.fr/iniesV4/dist/consultation.html?id=29536>